



## Source

Anti-Rituximab Antibody (AY37) is a Mouse monoclonal antibody produced from a hybridoma created by fusing SP2/0 myeloma and Mouse B-lymphocytes.

## Clone

AY37

## Species

Mouse

## Isotype

Mouse IgG1/kappa

## Antibody Type

Hybridoma Monoclonal

## Reactivity

Human

## Immunogen

Rituximab.

## Specificity

Recognizes Rituximab specifically, no cross reactivity with other humanized antibodies.

## Application

Application	Recommended Usage
ELISA	0.6-312.5 ng/mL

## Purity

>95% as determined by SDS-PAGE.

## Purification

Protein A purified/ Protein G purified

## Formulation

Lyophilized from 0.22  $\mu$ m filtered solution in Tris with Glycine, Arginine and NaCl, pH7.5 with trehalose as protectant.

Contact us for customized product form or formulation.

## Reconstitution

Please see Certificate of Analysis for specific instructions.

*For best performance, we strongly recommend you to follow the reconstitution protocol provided in the CoA.*

## Storage

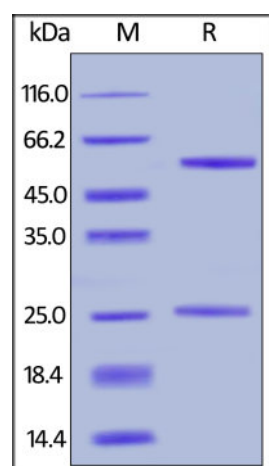
For long term storage, the product should be stored at lyophilized state at  $-20^{\circ}\text{C}$  or lower.

*Please avoid repeated freeze-thaw cycles.*

This product is stable after storage at:

- $4-8^{\circ}\text{C}$  for 12 months in lyophilized state;
- $-70^{\circ}\text{C}$  for 12 months under sterile conditions after reconstitution.

## SDS-PAGE



Anti-Rituximab Antibody (AY37) on SDS-PAGE under reducing (R) condition. The gel was stained with Coomassie Blue. The purity of the protein

Discounts, Gifts,  
and more!

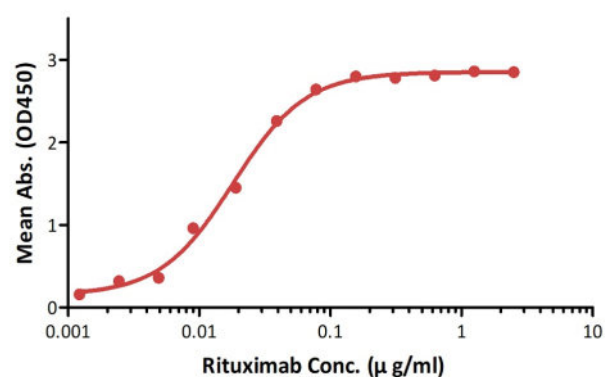




is greater than 95%.

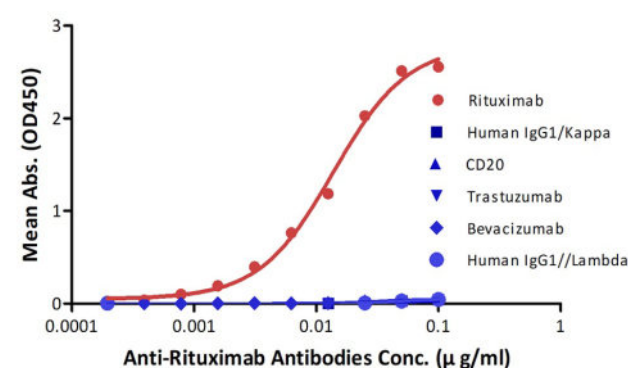
### Bioactivity-ELISA

Anti-Rituximab Antibodies (Neutralizing)—PK assay



Detection of rituximab by bridging ELISA in serum. Immobilized Anti-Rituximab Antibody (AY37) (Cat. No. RIB-Y37) at 2 µg/mL, add increasing concentrations of rituximab (10% human serum) and then add Biotinylated Anti-Rituximab Antibody (Cat. No. RIB-BY35) at 1 µg/mL. Detection was performed using HRP-conjugated streptavidin with a sensitivity of 1 ng/mL (QC tested).

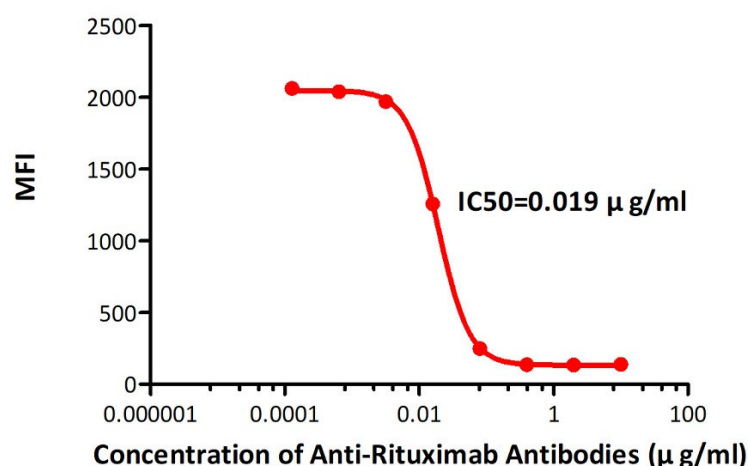
Determination of Anti-Rituximab Antibodies Specificity



Demonstration of the specificity of Anti-Rituximab Antibody (AY37) (Cat. No. RIB-Y37) to the rituximab.

### Bioactivity-FACS

Anti-Rituximab Antibodies inhibited the binding of Rituximab to 293F-CD20



FACS analysis shows that the binding of rituximab to 293F overexpressing CD20 was inhibited by increasing concentration of Anti-Rituximab Antibody (AY37) (Cat. No. RIB-Y37). The concentration of rituximab used is 10 ng/mL. The IC50 is 0.019 µg/ml (Routinely tested).

### Background

Rituxan is a genetically engineered chimeric murine/human monoclonal antibody directed against the CD20 antigen found on the surface of normal and malignant B lymphocytes. The antibody is an IgG1 kappa immunoglobulin containing murine light- and heavy-chain variable region sequences and human constant region sequences. Rituximab is composed of two heavy chains of 451 amino acids and two light chains of 213 amino acids

### Clinical and Translational Updates

Discounts, Gifts,  
and more!

