

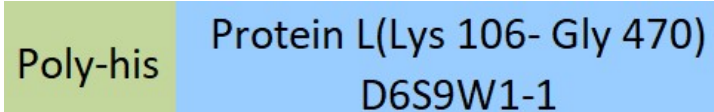
**Synonym**

RPL, Protein L

**Source**

PE-Labeled Recombinant Protein L, His Tag (RPL-PP2H2) is produced via site-specific conjugation of PE to Recombinant Protein L, His Tag under optimal conditions with a proprietary technology. Recombinant Protein L is expressed from E.coli cells. It contains AA Lys 106- Gly 470 (Accession # [D6S9W1-1](#)).

Predicted N-terminus: His

**Molecular Characterization**


This protein carries a polyhistidine tag at the N-terminus

The protein has a calculated MW of 43.7 kDa.

**Conjugate**

PE

Excitation Wavelength: 488 nm / 561 nm

Emission Wavelength: 575 nm

**Application**

Please note that this product is NOT compatible to streptavidin detection system.

**Formulation**Lyophilized from 0.22  $\mu$ m filtered solution in PBS, 0.5% BSA, pH7.4 with trehalose as protectant.

Contact us for customized product form or formulation.

**Reconstitution**

Please see Certificate of Analysis for specific instructions.

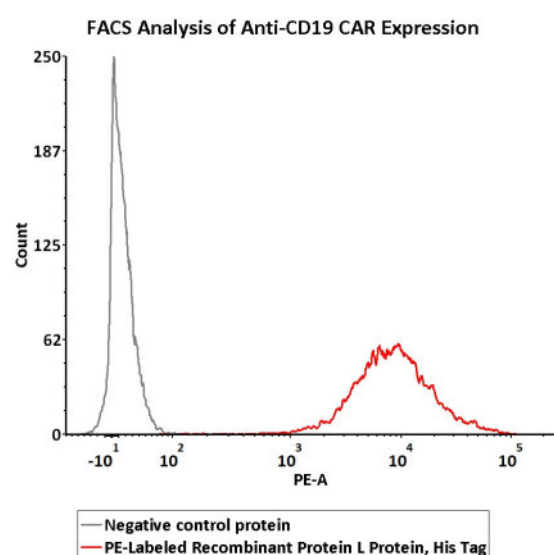
*For best performance, we strongly recommend you to follow the reconstitution protocol provided in the CoA.*

**Storage**For long term storage, the product should be stored at lyophilized state at  $-20^{\circ}\text{C}$  or lower.

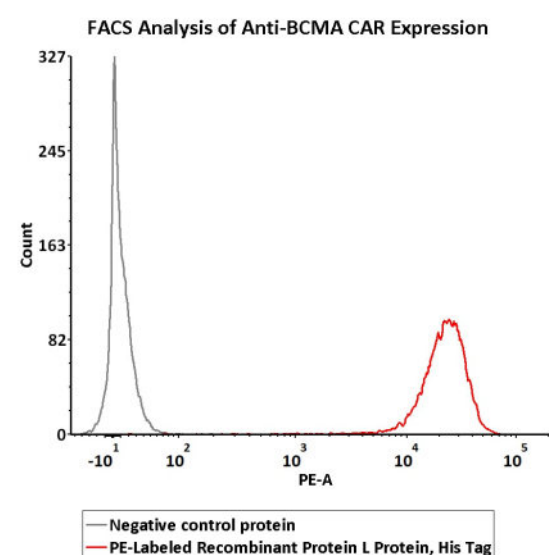
*Please protect from light and avoid repeated freeze-thaw cycles.*

This product is stable after storage at:

- $-20^{\circ}\text{C}$  to  $-70^{\circ}\text{C}$  for 12 months in lyophilized state;
- $-70^{\circ}\text{C}$  for 3 months under sterile conditions after reconstitution.

**Bioactivity-FACS**

$5 \times 10^5$  of the CD19-CAR-293 cells were stained with 100  $\mu$ L of 1:50 dilution (2  $\mu$ L stock solution in 100  $\mu$ L FACS buffer) of PE-Labeled Recombinant Protein L Protein, His Tag (Cat. No. RPL-PP2H2) and negative control protein respectively, PE signal was used to evaluate the binding activity (QC tested).



$5 \times 10^5$  of the BCMA-CAR-293 cells were stained with 100  $\mu$ L of 1:50 dilution (2  $\mu$ L stock solution in 100  $\mu$ L FACS buffer) of PE-Labeled Recombinant Protein L Protein, His Tag (Cat. No. RPL-PP2H2) and negative control protein respectively, PE signal was used to evaluate the binding activity (QC tested).

**Background**

Protein L was isolated from the surface of bacterial species *Peptostreptococcus magnus* and was found to bind Ig(IgG,IgM,IgA,IgE and IgD) through L chain interaction, from which the name was suggested. Despite this wide-ranging binding capability with respect to Ig classes, Protein L is not a universal immunoglobulin-binding protein. Binding of Protein L to immunoglobulins is restricted to those containing kappa light chains (i.e., k chain of the VL domain). In humans and mice, kappa (k) light chains predominate. The remaining immunoglobulins have lambda (l) light chains. The recombinant protein contains four immunoglobulin (Ig) binding domains (Bdomains) of the native protein. Besides antibody, protein L is also suitable for binding of a wide range of antibody fragments such as Fabs, single-chain variable fragments (scFv), and domain antibodies (Dabs).

### **Clinical and Translational Updates**

Please contact us via [TechSupport@acrobiosystems.com](mailto:TechSupport@acrobiosystems.com) if you have any question on this product.