



## Synonym

SDC1, Syndecan-1, CD138, SYND1, SDC

## Source

FITC-Labeled Human Syndecan-1, His Tag(SD1-HF228) is expressed from human 293 cells (HEK293). It contains AA Gln 23 - Gly 254 (Accession # [P18827-1](#)).

Predicted N-terminus: Gln 23

## Molecular Characterization

Syndecan-1( Gln 23 - Gly 254)  
P18827-1 Poly-his

This protein carries a polyhistidine tag at the C-terminus.

The protein has a calculated MW of 25.8 kDa. The protein migrates as 42-60 kDa under reducing (R) condition (SDS-PAGE) due to glycosylation.

## Conjugate

FITC

Excitation source: 488 nm spectral line, argon-ion laser

Excitation Wavelength: 488 nm

Emission Wavelength: 535 nm

## Labeling

*The primary amines in the side chains of lysine residues and the N-terminus of the protein are conjugated with FITC using standard chemical labeling method. The residual FITC is removed by molecular sieve treatment during purification process.*

## Protein Ratio

The FITC to protein molar ratio is 1.5-3.5.

## Endotoxin

Less than 1.0 EU per µg by the LAL method.

## Purity

>90% as determined by SDS-PAGE.

## Formulation

Lyophilized from 0.22 µm filtered solution in PBS, pH7.4 with trehalose as protectant.

Contact us for customized product form or formulation.

## Reconstitution

Please see Certificate of Analysis for specific instructions.

*For best performance, we strongly recommend you to follow the reconstitution protocol provided in the CoA.*

## Storage

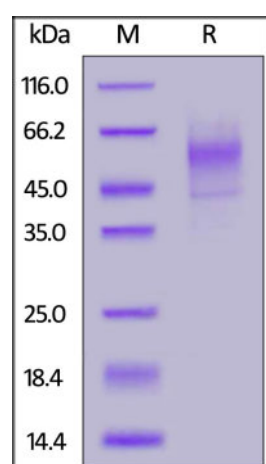
For long term storage, the product should be stored at lyophilized state at -20°C or lower.

*Please protect from light and avoid repeated freeze-thaw cycles.*

This product is stable after storage at:

- -20°C to -70°C for 12 months in lyophilized state;
- -70°C for 3 months under sterile conditions after reconstitution.

## SDS-PAGE



Discounts, Gifts,  
and more!



# FITC-Labeled Human Syndecan-1 Protein, His Tag

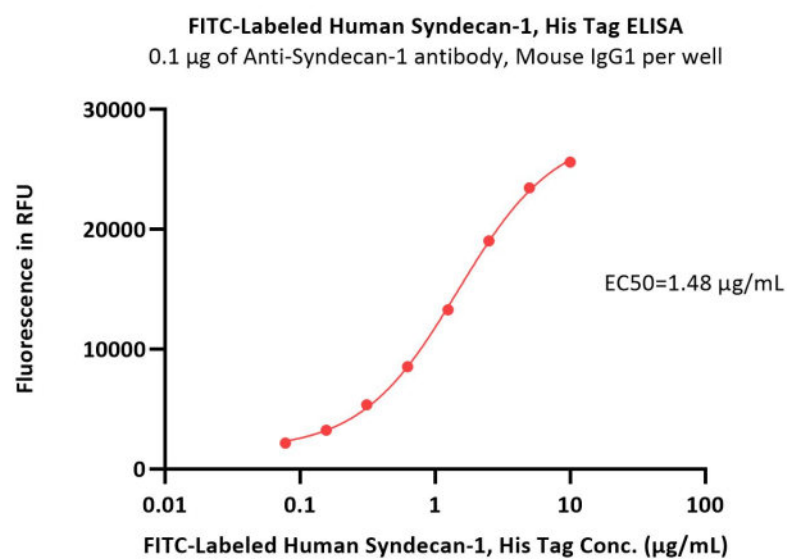
Catalog # SD1-HF228



BIOSYSTEMS  
**Acro**  
Surprise Inside!

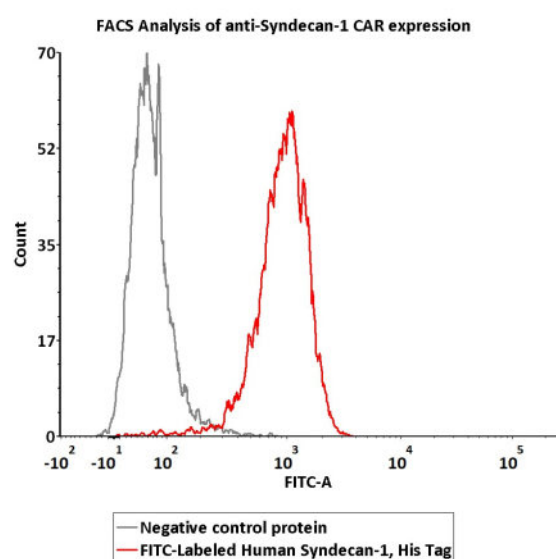
FITC-Labeled Human Syndecan-1, His Tag on SDS-PAGE under reducing (R) condition. The gel was stained with Coomassie Blue. The purity of the protein is greater than 90%.

## Bioactivity-ELISA



Immobilized Anti-Syndecan-1 antibody, Mouse IgG1 at 1 µg/mL (100 µL/well) can bind FITC-Labeled Human Syndecan-1, His Tag (Cat. No. SD1-HF228) with a linear range of 0.078-2.5 µg/mL (QC tested).

## Bioactivity-FACS



2e5 of anti-Syndecan-1 CAR-293 cells were stained with 100 µL of 3 µg/mL of FITC-Labeled Human Syndecan-1, His Tag (Cat. No. SD1-HF228) and negative control protein respectively, FITC signals was used to evaluate the binding activity (QC tested).

## Background

Syndecan-1 (SYND1 or SDC1) is also known as CD antigen CD138, is a transmembrane (type I) heparan sulfate proteoglycan and is a member of the syndecan proteoglycan family. The syndecans mediate cell binding, cell signaling, and cytoskeletal organization and syndecan receptors are required for internalization of the HIV-1 tat protein. The syndecan-1 / SDC1 protein functions as an integral membrane protein and participates in cell proliferation, cell migration and cell-matrix interactions via its receptor for extracellular matrix proteins. It is a useful marker for plasma cells, but only if the cells tested are already known to be derived from blood.

Discounts, Gifts,  
and more!



➤ [www.acrobiosystems.com](http://www.acrobiosystems.com)

5/8/2024



**Clinical and Translational Updates**

**Discounts, Gifts,  
and more!**

