

Synonym

SLAMF7,CD319,CS1,CRACC,19A,FOAP-12

Source

PE-Labeled Human SLAMF7 Protein, His Tag (SL7-HP2H6) is produced via conjugation of PE to Human SLAMF7 Protein, His Tag with a new generation site-specific technology under Star Staining labeling platform.

Human SLAMF7 Protein, His Tag is expressed from human 293 cells (HEK293). It contains AA Ser 23 - Met 226 (Accession # [AAH27867](#)).

Predicted N-terminus: Ser 23

Molecular Characterization

SLAMF7(Ser 23 - Met 226) AAH27867	Poly-his
--------------------------------------	----------

This protein carries a polyhistidine tag at the C-terminus.

The protein has a calculated MW of 36.9 kDa.

Conjugate

PE

Excitation Wavelength: 488 nm / 561 nm

Emission Wavelength: 575 nm

Endotoxin

Less than 1.0 EU per μg by the LAL method.

Purity

>90% as determined by SDS-PAGE.

Formulation

Lyophilized from 0.22 μm filtered solution in PBS, 0.2% BSA, pH7.4 with trehalose as protectant.

Contact us for customized product form or formulation.

Reconstitution

Please see Certificate of Analysis for specific instructions.

For best performance, we strongly recommend you to follow the reconstitution protocol provided in the CoA.

Storage

For long term storage, the product should be stored at lyophilized state at -20°C or lower.

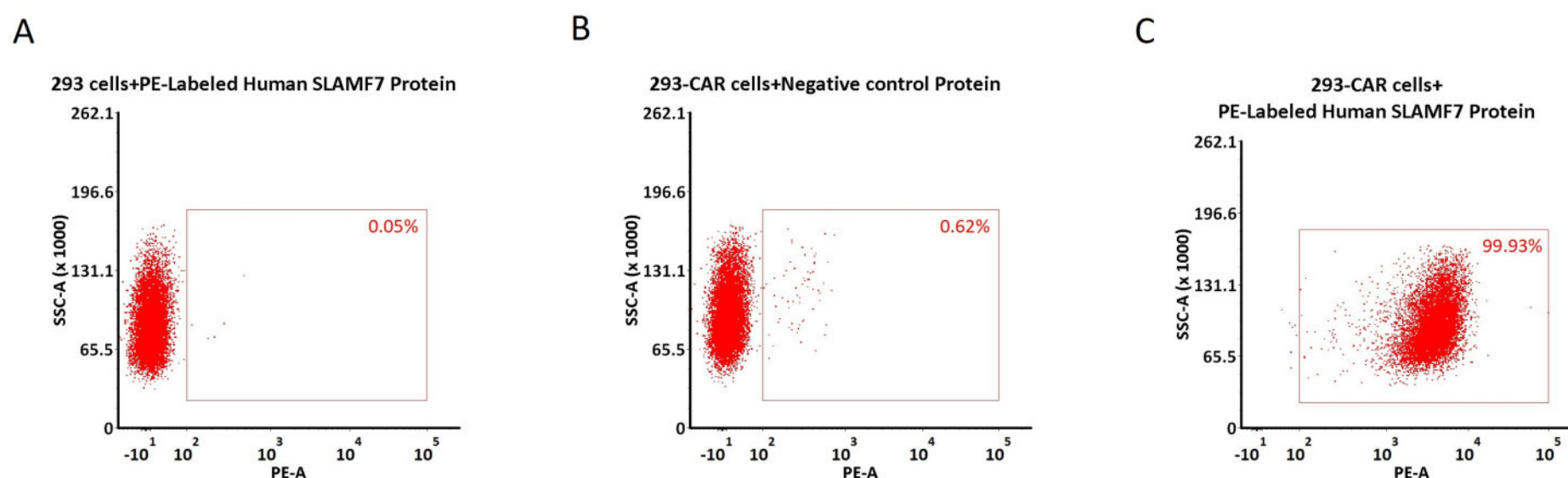
Please protect from light and avoid repeated freeze-thaw cycles.

This product is stable after storage at:

- -20°C to -70°C for 12 months in lyophilized state;
- -70°C for 3 months under sterile conditions after reconstitution.

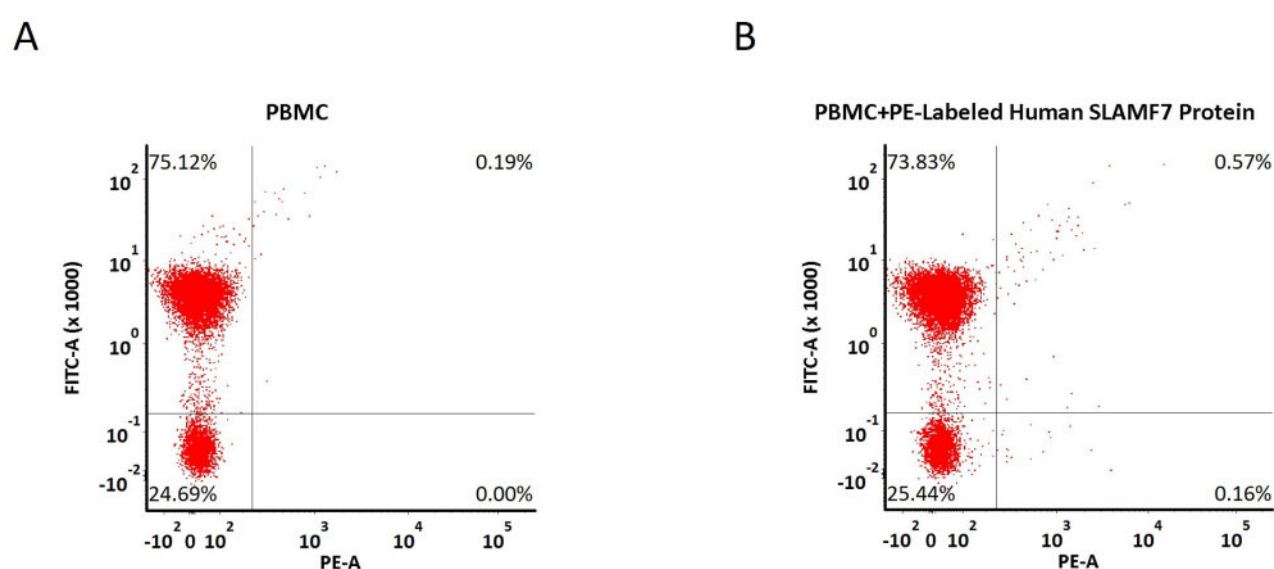
Evaluation of CAR expression

FACS Analysis of Anti-SLAMF7 CAR Expression



5e5 of anti-SLAMF7/CS1 CAR-293 cells were stained with 100 μL of 1:50 dilution (2 μL stock solution in 100 μL FACS buffer) of PE-Labeled Human SLAMF7 Protein, His Tag (Cat. No. SL7-HP2H6) and negative control protein respectively (Fig. C and B), and non-transfected 293 cells were used as a control (Fig. A). PE signal was used to evaluate the binding activity (QC tested).

FACS Analysis of Non-specific binding to PBMCs



5e5 of PBMCs were stained with PE-Labeled Human SLAMF7 Protein, His Tag (Cat. No. SL7-HP2H6) and anti-CD3 antibody, washed and then analyzed with FACS. FITC signal was used to evaluate the expression of CD3+ T cells in PBMCs, and PE signal was used to evaluate the non-specific binding activity to PBMCs (QC tested).

Background

SLAM family member 7 (SLAMF7) is also known as CD2-like receptor-activating cytotoxic cells (CRACC), Membrane protein FOAP-12, CD antigen CD319, Novel Ly9, Protein 19A, which is a single-pass type I membrane protein and a member of the CD2 family of cell surface receptors. SLAMF7 is expressed in spleen, lymph node, peripheral blood leukocytes, bone marrow, small intestine, stomach, appendix, lung and trachea. Isoform 1 of SLAMF7 mediates NK cell activation through a SH2D1A-independent extracellular signal-regulated ERK-mediated pathway. May play a role in lymphocyte adhesion. Isoform 3 of SLAMF7 does not mediate any NK cell activation.

Clinical and Translational Updates

Please contact us via TechSupport@acrobiosystems.com if you have any question on this product.