



## Source

Human SLC7A11&SLC3A2 Full Length Protein, Flag,His Tag(SLS-H52D3) is expressed from human 293 cells (HEK293). It contains AA Val 2 - Leu 501 & Glu 2- Ala 630 (Accession # [Q9UPY5](#) & [P08195](#)).

Predicted N-terminus: Met & Met

## Molecular Characterization

The protein has a calculated MW of 59.4 kDa & 69.9 kDa.

## Endotoxin

Less than 1.0 EU per µg by the LAL method.

## Formulation

*This product is not suitable for cell based experiments due to cytotoxicity of DDM.*

*DDM and CHS are INDISPENSABLE to keep membrane protein soluble and active, under no circumstance should you remove DDM and CHS.*

*DDM/CHS buffer (DC-11) is sold separately and not included in protein, and please contact us if you need the buffer.*

*If glycerol is not compatible to your application, remove glycerol just before immediate experiment, and NEVER store glycerol-free protein solution.*

Supplied as 0.2 µm filtered solution in 50 mM HEPES, 150 mM NaCl, DDM, CHS, pH7.5 with glycerol as protectant.

Contact us for customized product form or formulation.

## Shipping

*This product is supplied and shipped with dry ice, please inquire the shipping cost.*

## Storage

*Please avoid repeated freeze-thaw cycles.*

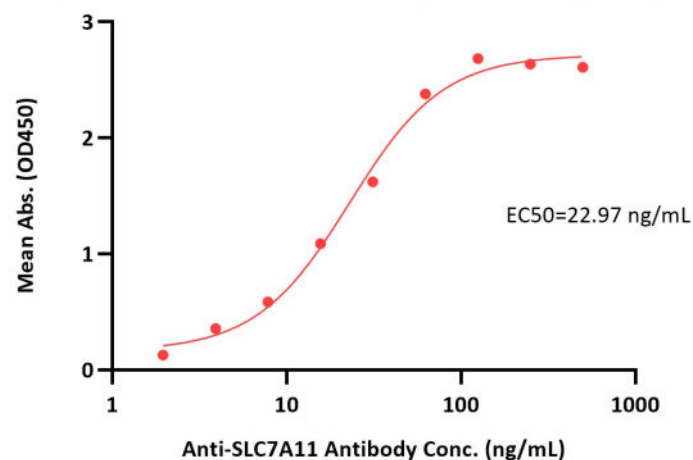
This product is stable after storage at:

- The product MUST be stored at -70°C or lower upon receipt;
- -70°C for 3 months under sterile conditions.

\*\*The DDM/CHS buffer (Cat. No. [DC-11](#)) is sold separately and not included in protein, you can follow [this link](#) for product information.

## Bioactivity-ELISA

Human SLC7A11&SLC3A2 Full Length Protein, Flag,His Tag ELISA  
0.5 µg of Human SLC7A11&SLC3A2 Full Length Protein, Flag,His Tag per well

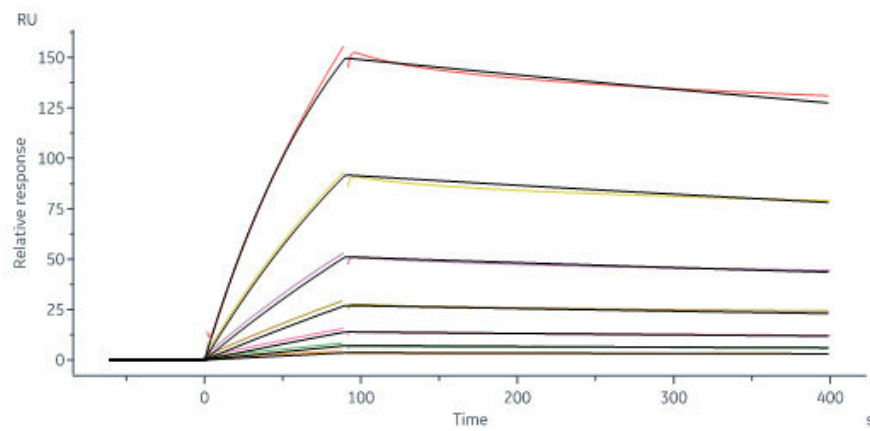


Immobilized Human SLC7A11&SLC3A2 Full Length Protein, Flag,His Tag (Cat. No. SLS-H52D3) at 5 µg/mL (100 µL/well) can bind Anti-SLC7A11 Antibody with a linear range of 2-63 ng/mL (QC tested).

## Bioactivity-SPR

Discounts, Gifts,  
and more!





SLC7A11 Antibody captured on Protein A Chip can bind Human SLC7A11&SLC3A2 Full Length Protein, Flag,His Tag (Cat. SLS-H52D3) with an affinity constant of 21.7 nM as determined in a SPR assay (in presence of DDM and CHS) (Biacore 8K) (Routinely tested).

## Background

Cysteine plays an essential role in cellular redox homeostasis as a key constituent of the tripeptide glutathione (GSH). A rate limiting step in cellular GSH synthesis is the availability of cysteine. However, circulating cysteine exists in the blood as the oxidised di-peptide cystine, requiring specialised transport systems for its import into the cell. System xc- is a dedicated cystine transporter, importing cystine in exchange for intracellular glutamate. To counteract elevated levels of reactive oxygen species in cancerous cells system xc- is frequently upregulated, making it an attractive target for anticancer therapies.

## Clinical and Translational Updates

Discounts, Gifts,  
and more!

