



### Synonym

DDPAC,FTDP-17,MAPT,MSTD,MTBT1,Tau,PHF-tau,TAU

### Source

Human Tau-410, His Tag(TAU-H5143) is expressed from E. coli cells. It contains AA Met 1 - Leu 410 (Accession # [P10636-5](#)).

Predicted N-terminus: His

### Molecular Characterization

Poly-his Tau(Met 1 - Leu 410)  
P10636-5

This protein carries a polyhistidine tag at the N-terminus.

The protein has a calculated MW of 44.5 kDa. The protein migrates as 55-65 kDa when calibrated against [Star Ribbon Pre-stained Protein Marker](#) under reducing (R) condition (SDS-PAGE).

### Endotoxin

Less than 1.0 EU per µg by the LAL method.

### Purity

>90% as determined by SDS-PAGE.

>90% as determined by SEC-MALS.

### Formulation

Supplied as 0.2 µm filtered solution in 50 mM Tris, 150 mM NaCl, pH7.5 with trehalose as protectant.

Contact us for customized product form or formulation.

### Shipping

*This product is supplied and shipped with dry ice, please inquire the shipping cost.*

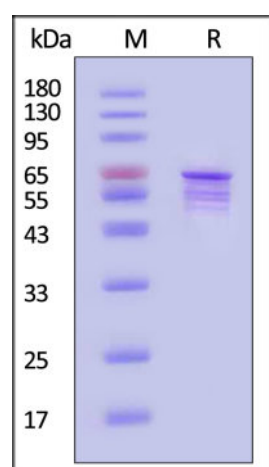
### Storage

*Please avoid repeated freeze-thaw cycles.*

This product is stable after storage at:

- -20°C to -70°C for 12 months in lyophilized state;
- -70°C for 3 months under sterile conditions after reconstitution.

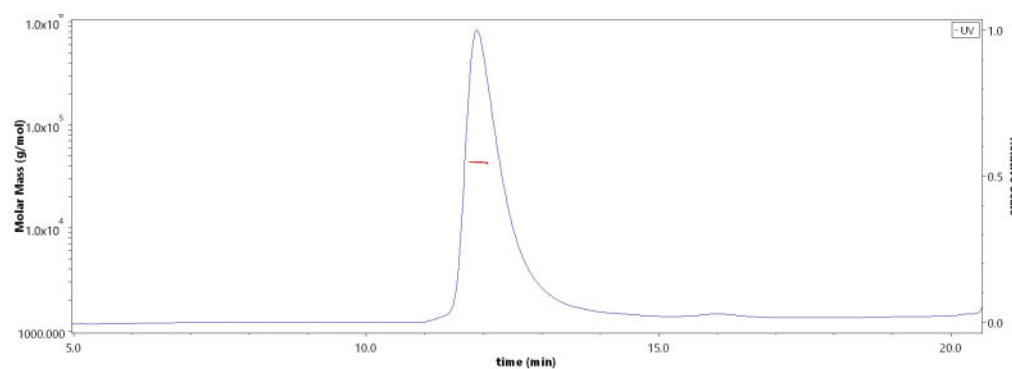
### SDS-PAGE



Human Tau-410, His Tag on SDS-PAGE under reducing (R) condition. The gel was stained with Coomassie Blue. The purity of the protein is greater than 90% (With [Star Ribbon Pre-stained Protein Marker](#)).

### Bioactivity-ELISA

### SEC-MALS

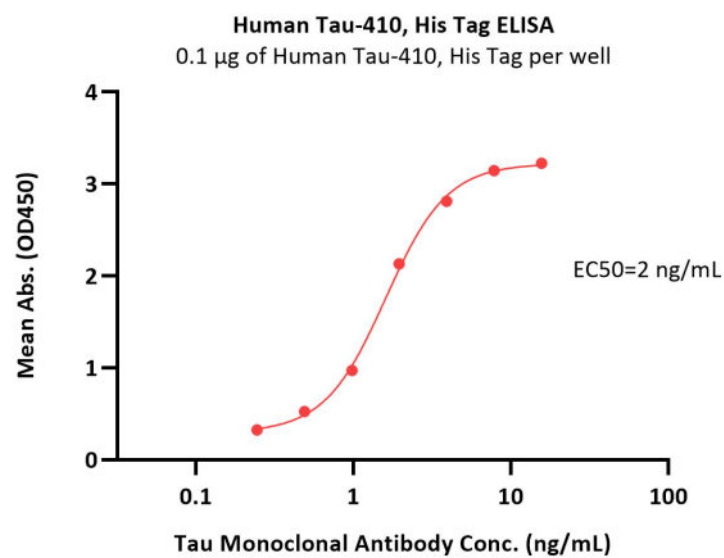


The purity of Human Tau-410, His Tag (Cat. No. TAU-H5143) is more than 90% and the molecular weight of this protein is around 40-60 kDa verified by SEC-MALS.

[Report](#)

Discounts, Gifts,  
and more!





Immobilized Human Tau-410, His Tag (Cat. No. TAU-H5143) at 1  $\mu$ g/mL (100  $\mu$ L/well) can bind Tau Monoclonal Antibody with a linear range of 0.2-4 ng/mL (QC tested).

## Background

Tau is a microtubule-associated protein, which encodes by the MAPT gene that located on chromosome 17q21. Tau Promotes microtubule assembly and stability, and might be involved in the establishment and maintenance of neuronal polarity. Hyperphosphorylation of the tau protein (tau inclusions, pTau) can result in the self-assembly of tangles of paired helical filaments and straight filaments, which are involved in the pathogenesis of Alzheimer's disease, frontotemporal dementia, and other tauopathies.

## Clinical and Translational Updates

Discounts, Gifts,  
and more!

