



### Synonym

HAVCR2,TIM3,TIMD3,FLJ14428,KIM3

### Source

Human TIM-3 Protein, Mouse IgG2a Fc Tag(TM3-H525b) is expressed from human 293 cells (HEK293). It contains AA Ser 22 - Arg 200 (Accession # [Q8TDQ0-1](#)).

Predicted N-terminus: Ser 22

### Molecular Characterization

TIM-3(Ser 22 - Arg 200) Q8TDQ0-1	mFc(Glu 98 - Lys 330) P01863
-------------------------------------	---------------------------------

This protein carries a mouse IgG2a Fc tag at the C-terminus.

The protein has a calculated MW of 46.8 kDa. The protein migrates as 50-65 kDa when calibrated against [Star Ribbon Pre-stained Protein Marker](#) under reducing (R) condition (SDS-PAGE) due to glycosylation.

### Endotoxin

Less than 0.1 EU per µg by the LAL method.

### Purity

>95% as determined by SDS-PAGE.

### Formulation

Lyophilized from 0.22 µm filtered solution in Tris with Glycine, Arginine and NaCl, pH7.5 with trehalose as protectant.

Contact us for customized product form or formulation.

### Reconstitution

Please see Certificate of Analysis for specific instructions.

*For best performance, we strongly recommend you to follow the reconstitution protocol provided in the CoA.*

### Storage

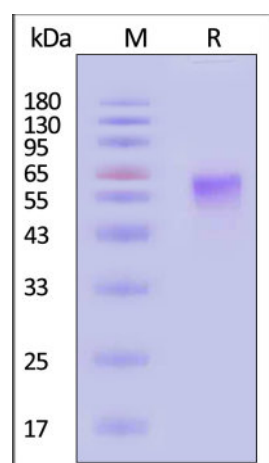
For long term storage, the product should be stored at lyophilized state at -20°C or lower.

*Please avoid repeated freeze-thaw cycles.*

This product is stable after storage at:

- -20°C to -70°C for 12 months in lyophilized state;
- -70°C for 3 months under sterile conditions after reconstitution.

### SDS-PAGE

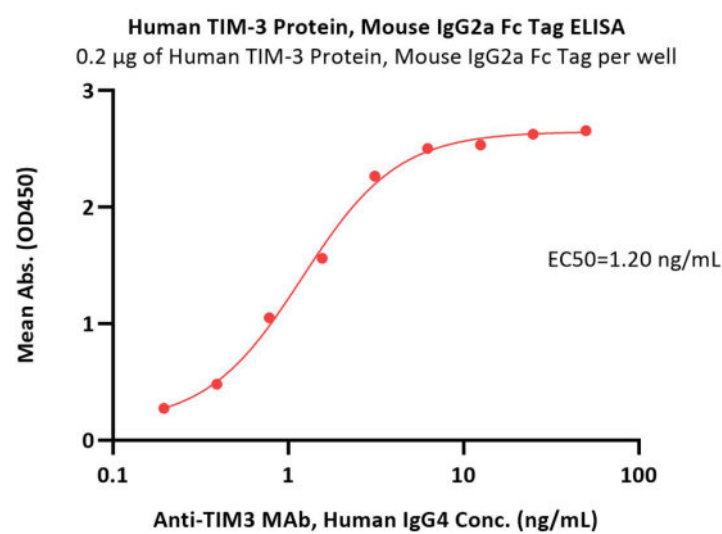


Human TIM-3 Protein, Mouse IgG2a Fc Tag on SDS-PAGE under reducing (R) condition. The gel was stained with Coomassie Blue. The purity of the protein is greater than 95% (With [Star Ribbon Pre-stained Protein Marker](#)).

### Bioactivity-ELISA

Discounts, Gifts,  
and more!





Immobilized Human TIM-3 Protein, Mouse IgG2a Fc Tag (Cat. No. TM3-H525b) at 2 µg/mL (100 µL/well) can bind Anti-TIM3 MAb, Human IgG4 with a linear range of 0.2-2 ng/mL (QC tested).

## Background

Hepatitis A virus cellular receptor 2 is also known as HAVCR2, FLJ14428, KIM3, TIM3, TIMD3, is a member of the TIM family of immune regulating molecules with one Ig-like V-type domain and a Ser/Thr-rich mucin stalk. CD4-positive T helper lymphocytes can be divided into types 1 (Th1) and 2 (Th2) on the basis of their cytokine secretion patterns. Th1 cells and their associated cytokines are involved in cell-mediated immunity to intracellular pathogens and delayed-type hypersensitivity reactions, whereas Th2 cells are involved in the control of extracellular helminthic infections and the promotion of atopic and allergic diseases. The 2 types of cells also cross-regulate the functions of the other. HAVCR2 is a Th1-specific cell surface protein that regulates macrophage activation and enhances the severity of experimental autoimmune encephalomyelitis in mice. HAVCR2 regulates macrophage activation. Inhibits T-helper type 1 lymphocyte (Th1)-mediated auto- and alloimmune responses and promotes immunological tolerance. May be also involved in T-cell homing. Dysregulation of the HAVCR2-galectin-9 pathway could underlie chronic autoimmune disease states in human, such as multiple sclerosis.

## Clinical and Translational Updates

Discounts, Gifts,  
and more!

