

Synonym

TACSTD2,GA733-1,M1S1,TROP2

Source

Rhesus macaque TROP-2 Protein, Fc Tag(TR2-R5255) is expressed from human 293 cells (HEK293). It contains AA Gln 31 - Thr 274 (Accession # [XP_001114599.1](#)).

Predicted N-terminus: Gln 31

Molecular Characterization

TROP-2(Gln 31 - Thr 274) XP_001114599.1	Fc(Pro 100 - Lys 330) P01857
--	---------------------------------

This protein carries a human IgG1 Fc tag at the C-terminus

The protein has a calculated MW of 53.9 kDa. The protein migrates as 65-80 kDa when calibrated against [Star Ribbon Pre-stained Protein Marker](#) under reducing (R) condition (SDS-PAGE) due to glycosylation.

Endotoxin

Less than 1.0 EU per µg by the LAL method.

Purity

>90% as determined by SDS-PAGE.

Formulation

Lyophilized from 0.22 µm filtered solution in 50 mM Tris, 100 mM Glycine, 25 mM Arginine, 150 mM NaCl, pH7.5 with trehalose as protectant.

Contact us for customized product form or formulation.

Reconstitution

Please see Certificate of Analysis for specific instructions.

For best performance, we strongly recommend you to follow the reconstitution protocol provided in the CoA.

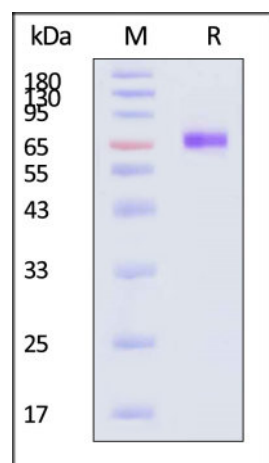
Storage

For long term storage, the product should be stored at lyophilized state at -20°C or lower.

Please avoid repeated freeze-thaw cycles.

This product is stable after storage at:

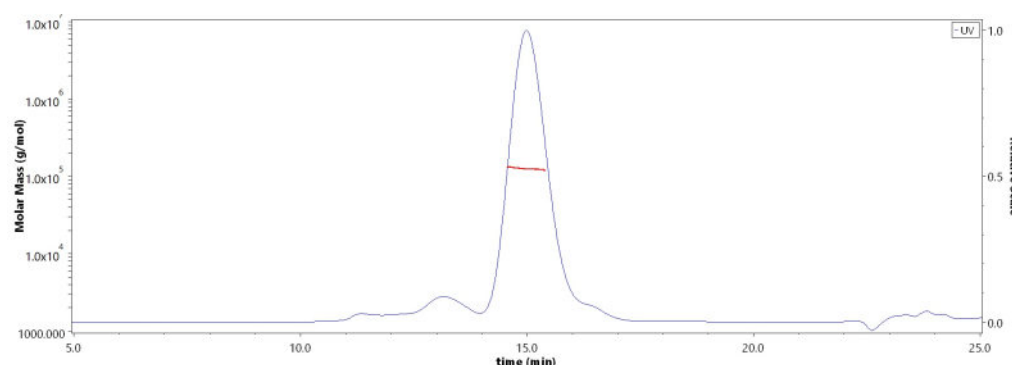
- -20°C to -70°C for 12 months in lyophilized state;
- -70°C for 3 months under sterile conditions after reconstitution.

SDS-PAGE

Rhesus macaque TROP-2 Protein, Fc Tag on SDS-PAGE under reducing (R) condition. The gel was stained with Coomassie Blue. The purity of the protein is greater than 90% (With [Star Ribbon Pre-stained Protein Marker](#)).

Bioactivity-ELISA**TROP-2 ELISA**

Immobilized Rhesus macaque TROP-2 Protein, Fc Tag (Cat. No. TR2-R5255) at 1 µg/mL (100 µL/well) can bind Mouse Monoclonal Antibody Against Human TROP-2 Protein, Mouse IgG1 Kappa with a linear range of 0.1-2 ng/mL (QC tested).

SEC-MALS

The purity of Rhesus macaque TROP-2 Protein, Fc Tag (Cat. No. TR2-R5255) is more than 85% and the molecular weight of this protein is around 115-135 kDa verified by SEC-MALS.

[Report](#)

Background

TROP-2 is a single-copy gene in human cells, and encodes a type-1 transmembrane glycoprotein which is over-expressed in various malignancies, also referred to as tumor associated calcium signal transducer 2 (TACSTD2), GA733-1 or MIS1. TROP-2 is related to epithelial cell adhesion molecule (EpCAM), also called TROP-1, gp40, and KSA. Trop-1 and Trop-2 are homologous to serum IGF-II-binding proteins and appear as signal transducers. Thus, they likely represent novel cell-surface receptors and may play a role in regulating the growth of carcinoma cells.

Clinical and Translational Updates

Please contact us via TechSupport@acrobiosystems.com if you have any question on this product.