

Rhesus macaque TROP-2 / TACSTD2 Protein, His Tag (MALS verified)

Catalog # TR2-R52H3



BIOSYSTEMS
Acro
Surprise Inside!

Synonym

TACSTD2,GA733-1,M1S1,TROP2

Source

Rhesus macaque TROP-2 Protein, His Tag(TR2-R52H3) is expressed from human 293 cells (HEK293). It contains AA Gln 31 - Thr 274 (Accession # [XP_001114599.1](#)).

Predicted N-terminus: Gln 31

Molecular Characterization

TROP-2(Gln 31 - Thr 274)
XP_001114599.1 Poly-his

This protein carries a polyhistidine tag at the C-terminus.

The protein has a calculated MW of 29.4 kDa. The protein migrates as 38-48 kDa under reducing (R) condition (SDS-PAGE) due to glycosylation.

Endotoxin

Less than 1.0 EU per µg by the LAL method.

Purity

>90% as determined by SDS-PAGE.

Formulation

Lyophilized from 0.22 µm filtered solution in PBS, pH7.4 with trehalose as protectant.

Contact us for customized product form or formulation.

Reconstitution

Please see Certificate of Analysis for specific instructions.

For best performance, we strongly recommend you to follow the reconstitution protocol provided in the CoA.

Storage

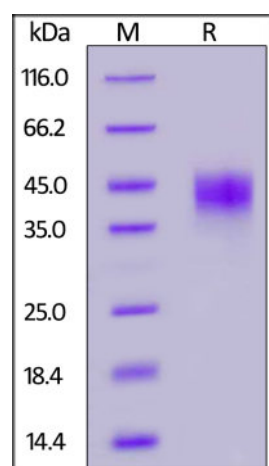
For long term storage, the product should be stored at lyophilized state at -20°C or lower.

Please avoid repeated freeze-thaw cycles.

This product is stable after storage at:

- -20°C to -70°C for 12 months in lyophilized state;
- -70°C for 3 months under sterile conditions after reconstitution.

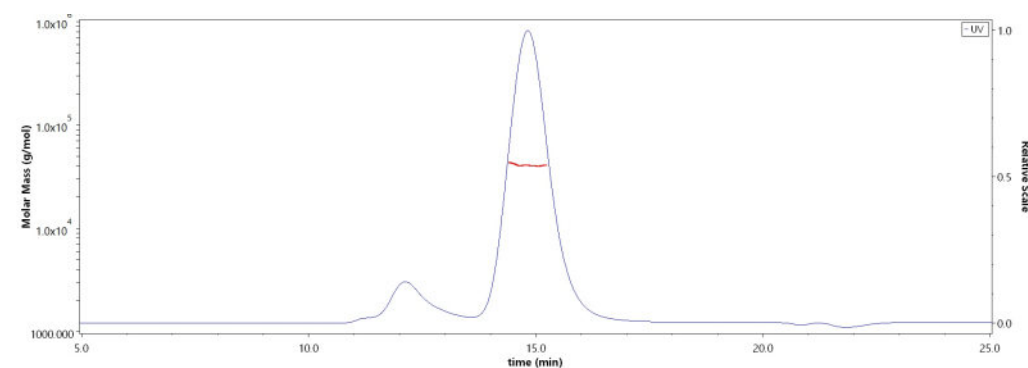
SDS-PAGE



Rhesus macaque TROP-2 Protein, His Tag on SDS-PAGE under reducing (R) condition. The gel was stained with Coomassie Blue. The purity of the protein is greater than 90%.

Bioactivity-ELISA

SEC-MALS



The purity of Rhesus macaque TROP-2 Protein, His Tag (Cat. No. TR2-R52H3) is more than 85% and the molecular weight of this protein is around 35-45 kDa verified by SEC-MALS.

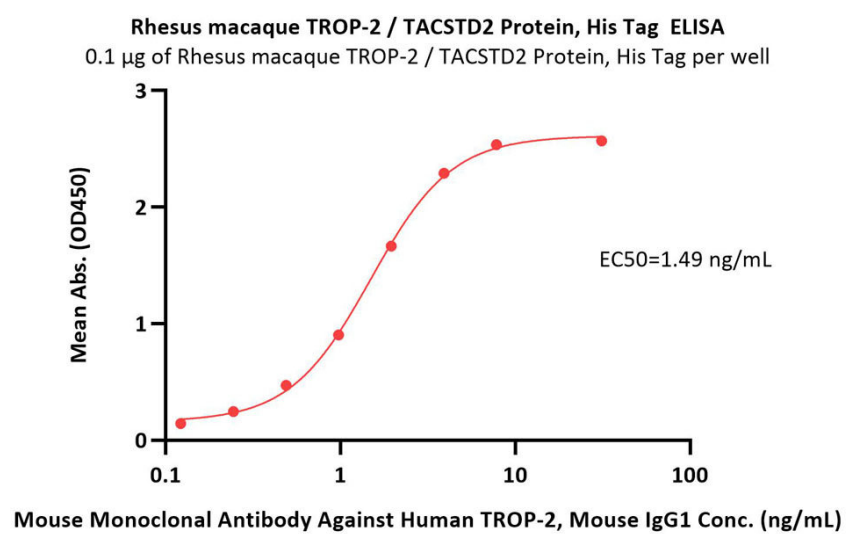
[Report](#)

Discounts, Gifts,
and more!



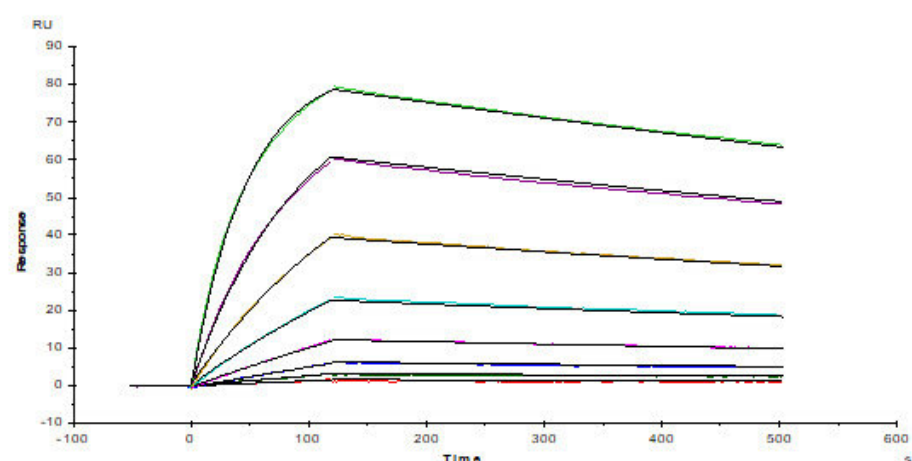
➤ www.acrobiosystems.com

7/18/2024



Immobilized Rhesus macaque TROP-2 Protein, His Tag (Cat. No. TR2-R52H3) at 1 µg/mL (100 µL/well) can bind Mouse Monoclonal Antibody Against Human TROP-2, Mouse IgG1 with a linear range of 0.1-2 ng/mL (QC tested).

Bioactivity-SPR



Captured Trop2 antibody on CM5 chip via anti-mouse antibodies surface can bind Rhesus macaque TROP-2 Protein, His Tag (Cat. No. TR2-R52H3) with an affinity constant of 5.48 nM as determined in a SPR assay (Biacore T200) (Routinely tested).

Background

TROP-2 is a single-copy gene in human cells, and encodes a type-1 transmembrane glycoprotein which is over-expressed in various malignancies, also referred to as tumor associated calcium signal transducer 2 (TACSTD2), GA733-1 or M1S1. TROP-2 is related to epithelial cell adhesion molecule (EpcAM), also called TROP-1, gp40, and KSA. Trop-1 and Trop-2 are homologous to serum IGF-II-binding proteins and appear as signal transducers. Thus, they likely represent novel cell-surface receptors and may play a role in regulating the growth of carcinoma cells.

Clinical and Translational Updates

Discounts, Gifts,
and more!

